

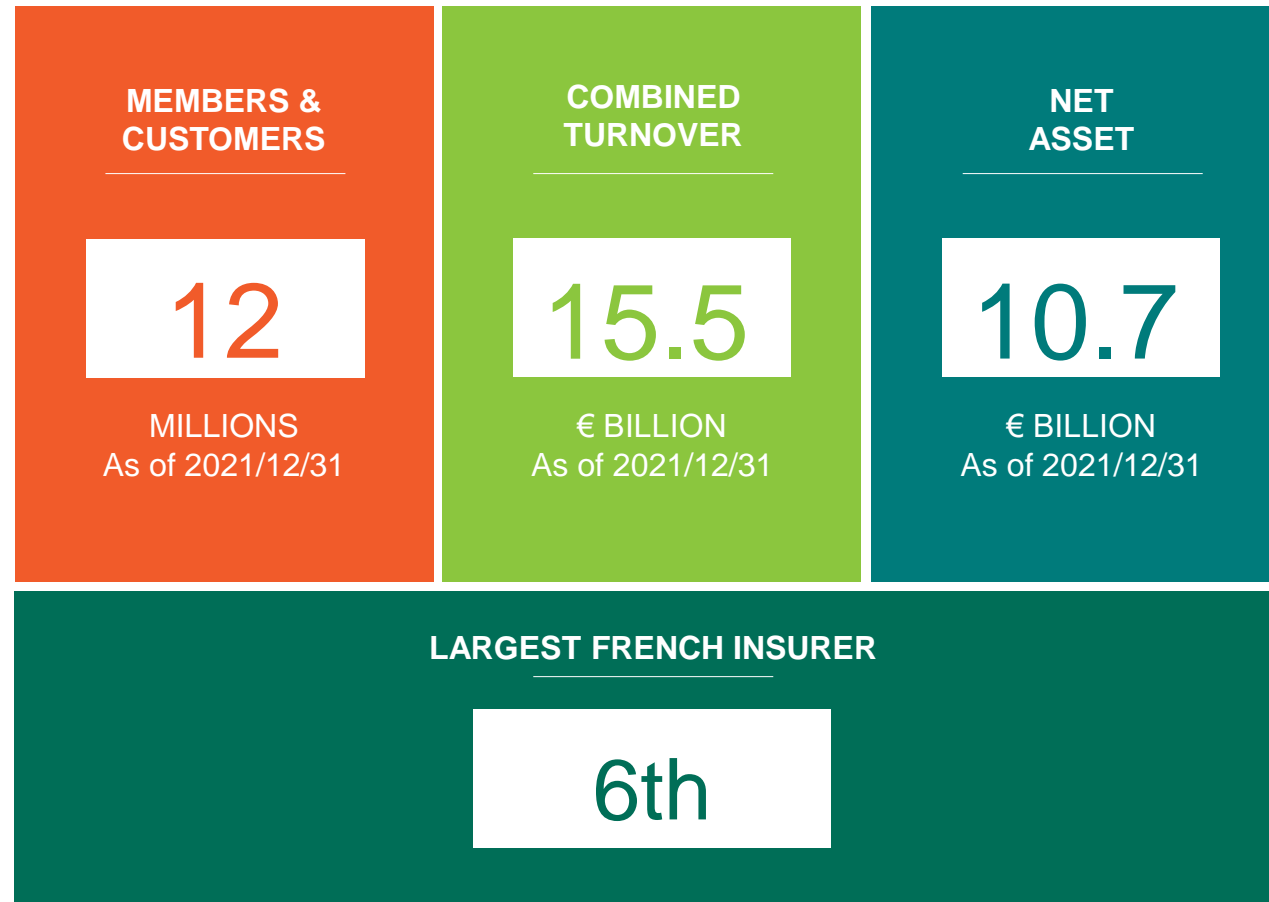
CORPORATE INTRODUCTION

GROUPAMA AM

2 0 2 2 / 1 2 / 3 1

GROUPAMA – DATA FACTS

"We are here to enable as many people as possible to build their lives with confidence."



GROUPAMA AM : A LEADER IN ACTIVE MANAGEMENT

A WHOLLY-OWNED SUBSIDIARY OF THE GROUPAMA GROUP

93.5 € BILLION ASSETS UNDER MANAGEMENT*

24.0 € BILLION ASSETS UNDER MANAGEMENT FOR EXTERNAL CLIENTS*

HIGHLY PERFORMANT TEAMS

239 EMPLOYEES

FOR PORTFOLIO MANAGEMENT & RESEARCH

AWARDED PERFORMANCE

**43 PORTFOLIO MANAGERS
10 TRADERS**

**PORTFOLIO
MANAGEMENT &
RESEARCH TEAM***

**15 ANALYSTS / ECONOMISTS
6 FINANCIAL ENGINEERS**

*Data as of 2022/12/31

INVEST FOR THE FUTURE

WHAT WE BELIEVE

Finance can help change the world by selecting and investing in companies that build their performance in a sustainable way.

OUR VISION TO ASSET MANAGEMENT

We believe that the best performances are those that are sustained over time. Groupama Asset Management's expertise lies in measuring this sustainable performance, to guarantee its clients a responsible and efficient investment.

OUR WAY TO PRACTICE OUR BUSINESS

At Groupama Asset Management, finance is not just about tools and predictive software, but is driven by men and women: involved, committed, convinced and whose expertise is essential to generate sustainable and responsible performance

Our “raison d'être” is to enable our clients to make this choice for the future and to guarantee them a responsible and efficient investment. A “raison d'être” that we express through our signature: **Invest for the future**

STRATEGIC ORIENTATION

**Be one of the leading Investment solution platform
linked to mutualist environment for the Group Groupama,
institutional clients and distribution networks :**



EXPERT

In Asset Liability Management



KEY PLAYER

For long term pension solution



**REFERENCE
PARTNER**

For distribution platform

6th AM COMPANY

In France according to AuM

Source : AFG ranking
as of 2021/12/31

« BEST ASSET MANAGER »*

**In Europe
41 - 70 rated funds**

Source : Fundclass
as of 2022/03/10

2th AM COMPANY

**In France, according to net
new assets on french fund
market**

Source : EuroPerformance
NMO – as of 31/12/2021

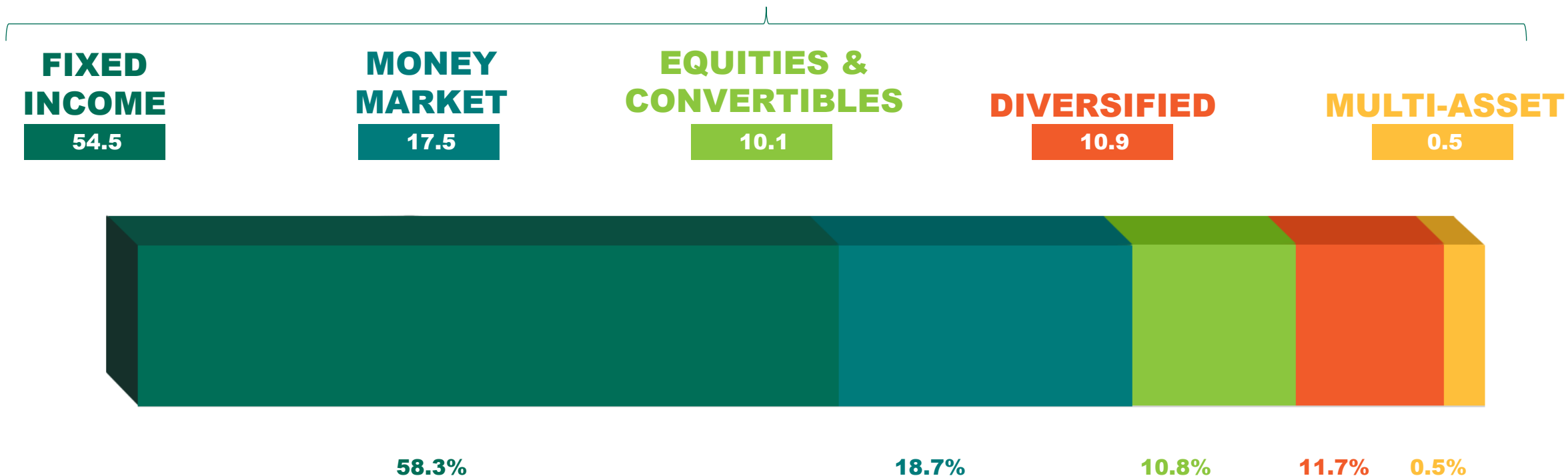


INTERNATIONAL DEVELOPMENT



ASSETS UNDER MANAGEMENT: € 93.5 bn

DISTRIBUTION BY ASSET CLASSES (Data as of 2022/12/31 in € billions)



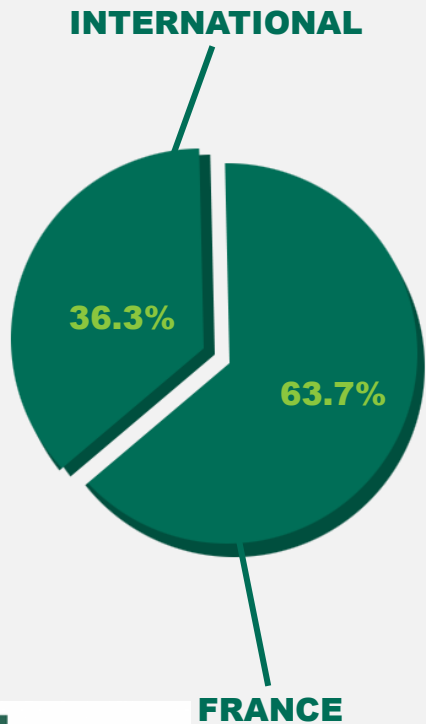
A BROAD SPECTRUM OF EXPERT KNOWLEDGE COVERING SEVERAL HIGH VALUE-ADDED ASSET CLASSES

EXTERNAL CLIENTS DEVELOPMENT: € 24 bn

(Data as of 2022/12/31)

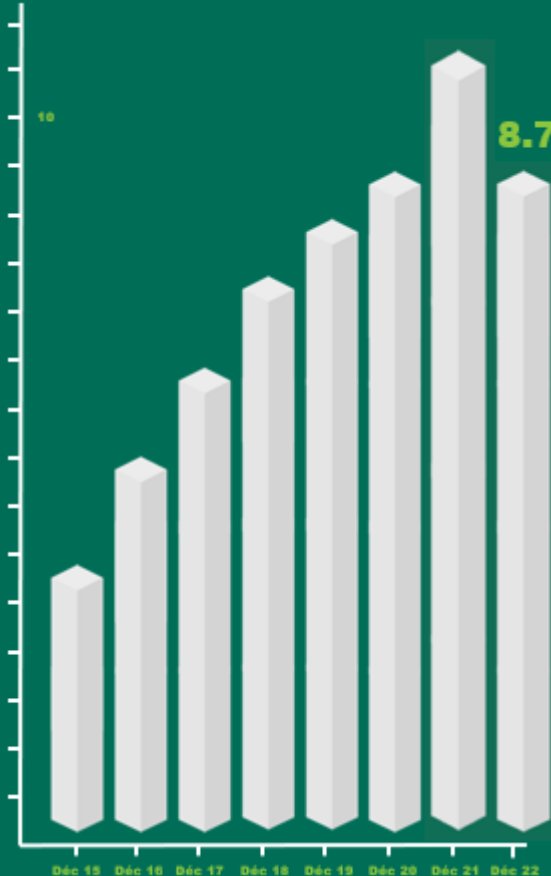
GEOGRAPHICAL DISTRIBUTION

Asset under management for external clients



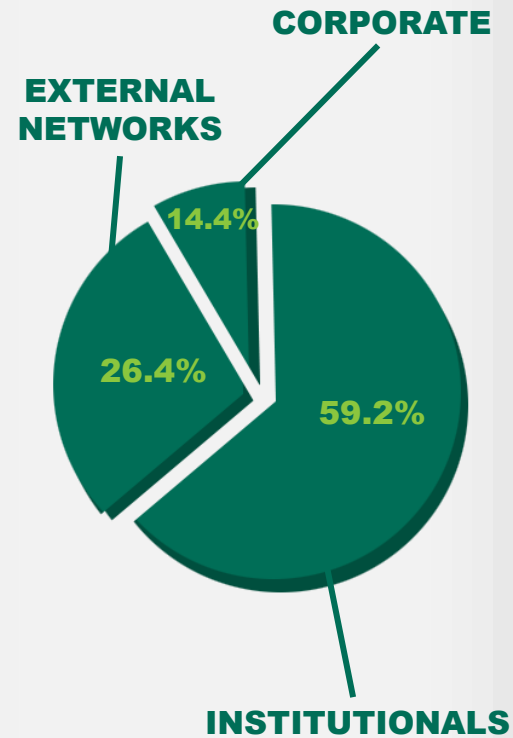
ASSETS OF INTERNATIONAL CLIENTS

(€ billions)
(Data as of 2022/12/31)



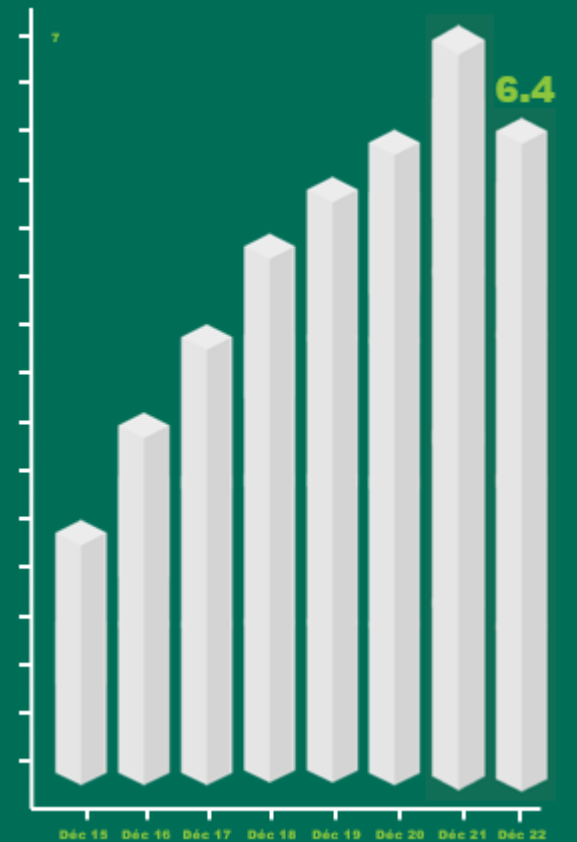
DISTRIBUTION BY CUSTOMER TYPE

Assets under management for external clients



ASSETS EXTERNAL NETWORKS

(€ billions)
(Data as of 2022/12/31)



A RESPONSIBLE VISION OF FINANCE



COMPREHENSIVE INVESTMENT SOLUTIONS

Always alert to the needs of its customers and the trends of the markets, Groupama Asset Management proposes comprehensive investment solutions that cover all the main asset classes.

To establish regular high performance in a long-term perspective, the management teams implement a management strategies based on extensive internal expert analyses. Groupama Asset Management has also developed highly specialized expertise in specific domains, independent of standard indexes and founded on the convictions of its own managers and analysts.



TAILORED RELATIONSHIP WITH CLIENTS

With its close-knit human-scale organization, Groupama Asset Management provides a structure that is both responsive and accessible to all of its clients.

Each client, whether in France or abroad, benefits from a specially tailored relationship with commercial teams that are able to propose deemed appropriate and specifically adapted investment solutions.



A RESPONSIBLE VISION OF FINANCE

For twenty years, Groupama Asset Management has been actively committed to the field of socially responsible investing (SRI) with a long-term strategic vision.

This investment philosophy aims to :

- Integrate ESG (Environmental, social and corporate governance) criteria in investment decisions pragmatically and across the board
- Commit to all clients and shareholders through a consistent and determined governance

ESG* : A CORPORATE STRATEGY



**CHIEF
INVESTMENT
OFFICER**
Xavier Hoche

A team dedicated to ESG corporate strategy, directly attached to the General Management



**DIRECTOR OF
RESEARCH**
Marie-Pierre
Peillon



**ESG
INTEGRATION
MANAGER**
Aurélie de
Barochez

OBJECTIVES

- Promote ESG mindset in all Groupama AM departments through an active training policy
- Evolve our offer towards more integration and a range of ESG thematic products

Implementation at the level of research and asset management teams :

- RESEARCH : 12 financial and extra-financial analysts**
- ASSET MANAGEMENT : ESG portfolio managers within all our expertise
- ESG STRATEGY : 3 dedicated employees

ESG is now integrated indiscriminately at team level research and management

* Environmental, Social, Governance

**Data as of 2022/12/31

ACTIVELY RESPONSIBLE MANAGER

The ESG Strategy is a major growth driver for Groupama Asset Management ...

A+ rating

By PRIs on our integration policy in 2021



OUR LABELLED FUNDS

49 open-ended funds



77.3

€ BILLION

Assets under management taking into account ESG criteria*

on

93.5

€ BILLION

Assets under management (as of 22/12/30)

... and a long standing commitment to the place



Chairman of the Responsible Investment Committee since May 2015



Founding signatory of PRI



Member of non-financial analysis committee



Member of the Observatory of Corporate Social Responsibility 2014 to 2018



Member of Spanish Sustainable Investment Forum



Member of Eurosif France



Member of Finance for Tomorrow



CONTACT



ARNAUD GANET
HEAD OF SALES
GLOBAL DISTRIBUTION MANAGER
+33 1 44 56 56 61
aganet@groupama-am.fr



OLIVIER LE BRAZ
GLOBAL INSTITUTIONAL
CUSTOMERS MANAGER
+33 1 44 56 57 35
olebraz@groupama-am.fr

RELATIONS INVESTISSEURS INSTITUTIONNELS EUROPE FRANCOPHONE



ROMAIN HUÉ
+33 1 44 56 57 80
rhue@groupama-am.fr



ETIENNE LALUQUE
+33 1 44 56 89 78
elaluque@groupama-am.fr

RELATIONS DISTRIBUTEURS EUROPE FRANCOPHONE



MATTHIEU PAINTURAUD
Head of Distribution Francophone Europe
+33 1 44 56 77 72
mpainturaud@groupama-am.fr



LOÏC SIMON
+33 1 44 56 58 94
lsimon@groupama-am.fr



JEROME LARSONNEUR
Networks Sales Manager
+33 1 44 56 56 20
jlarsonneur@groupama-am.fr



GASPARD THEYSSET
+33 1 44 56 66 25
gtheysset@groupama-am.fr



ANTOINE DUMONT
+33 1 44 56 66 61
adumont@groupama-am.fr



SABINE PETER
+33 1 44 56 77 09
speter@groupama-am.fr

DEVELOPMENT - SPAIN/ LATAM



JUAN RODRIGUEZ-FRAILE
Country Head Iberia & Latam
+39 06 08 67 27 35
Jrodriguez-fraile@groupama-am.es



SERGIO LÓPEZ DE URALDE
+ 34 911 120 814
slopezdeuralde@groupama-am.es



MAYA MONTES-JOVELLAR
+ 34 911 120 814
mmontesjovellar@groupama-am.es

DEVELOPMENT - ITALY



FABRIZIO SALVI
Relationship Manager – Institutional Sales
(Italy)
+39 06 83 97 52 54
fsalvi@groupama-am.it



LORENZO CORAGGIO
+ 39 06 69 34 03 72
lcoraggio@groupama-am.it

DISCLAIMER

This document has been prepared for informational purposes only.
Groupama Asset Management and its subsidiaries waive all liability in the event this document is altered, misrepresented or falsified.
Any unauthorized changes, use or disclosure in part or in full is strictly prohibited.
Past performances are not reliable indicators of future results.

Prior to investing, all investors must review the UCITS prospectus or Key Investor Information Document (KIID).
These documents and other periodic documents may be obtained free of charge upon request to Groupama Asset Management or at www.groupama-am.com
The information contained in this publication is based on sources we deem reliable.
However we make no guarantee as to their accuracy, completeness, validity or relevance.

This non-contractual material in no way constitutes a recommendation, or a solicitation of an offer of sale, purchase, or arbitrage,
and shall under no circumstances be interpreted as such.

The sales teams at Groupama Asset Management and its subsidiaries are at your disposal to provide you with personalized advice.
Published by Groupama Asset Management – Registered office: 25, rue de la Ville l'Evêque, 75008 Paris - Website: www.groupama-am.com



French public limited company (Société Anonyme)
with a capital of 1,878,910 euros
Reg. No. 389 522 152 RCS Paris

Portfolio management company
Approval No. GP93-02 dated 1993/01/05

Registered office : 25, rue de la Ville l'Evêque
75008 Paris - France
Tel: + 33.1.44.56.76.76

www.groupama-am.com